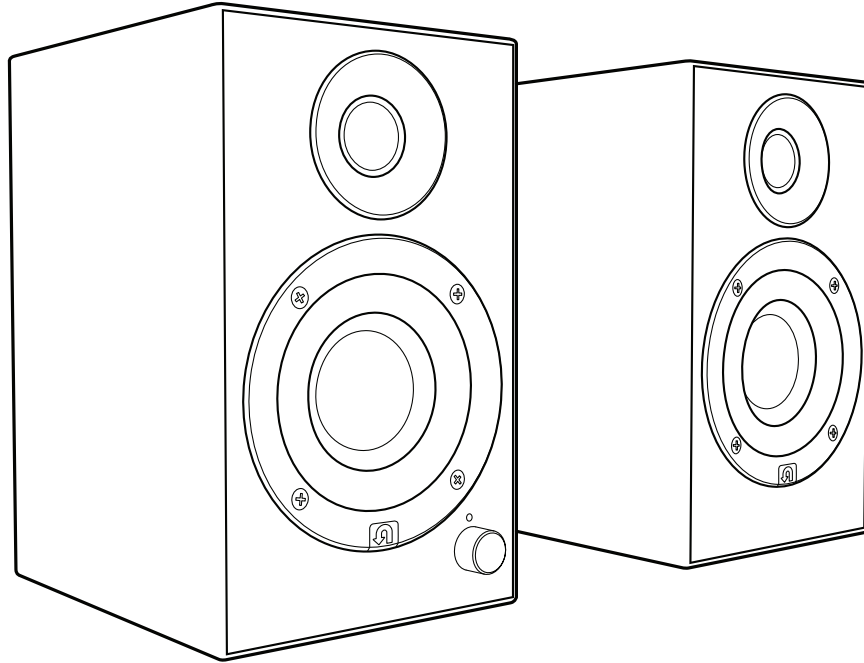


Ethos Powered Speakers

Setup Guide



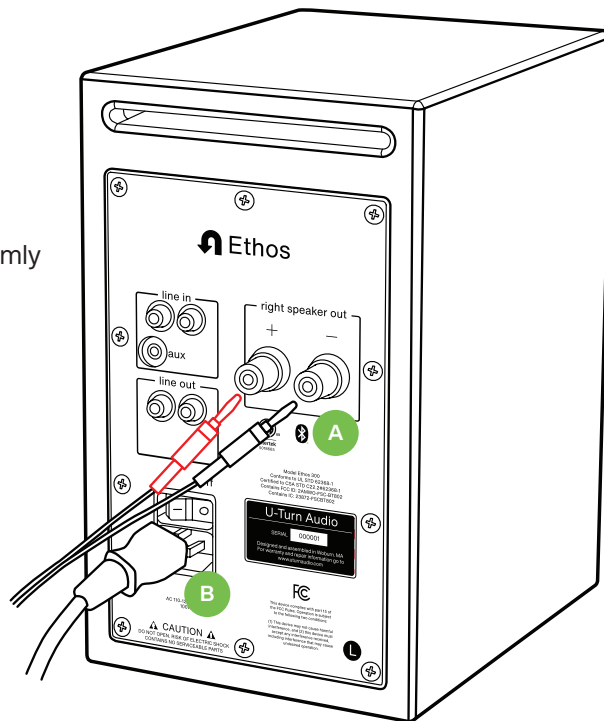
1

Initial setup

Important: Please read safety information on page 5 before setting up Ethos.

- A** Connect the left (powered) and right (passive) speakers by inserting the speaker cable plugs firmly into the terminals on the back of each speaker.
- B** Plug in the power cable and turn on the power switch.
- C** Set volume using the volume control knob on the front of the powered speaker.

For more information and videos, visit uturnaudio.com/learn



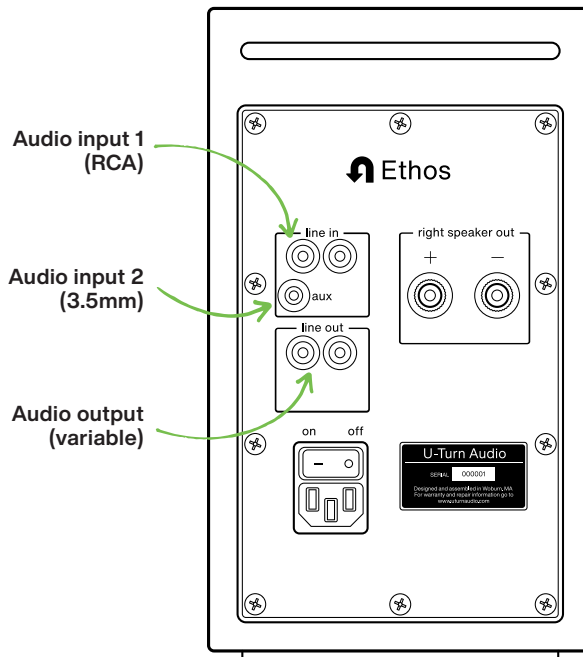
2

Connecting wired devices

Ethos has two analog inputs: a dual RCA input and a 3.5 mm AUX input. The inputs are designed for line level sources, so you will need a phono preamp to connect a turntable.

The audio output lets you connect other devices such as a subwoofer. The output level is controlled by the volume control knob to ensure level matching with your connected device.

Ethos does not have a source selector. Multiple sources can be played through the speakers at the same time.



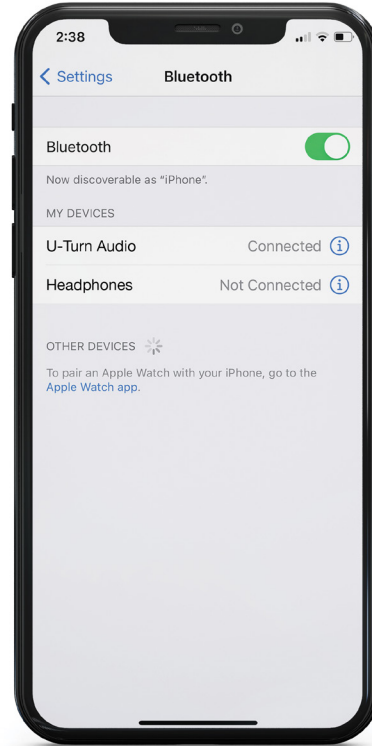
3

Connecting a Bluetooth® device

To use Ethos with a Bluetooth® device, select “U-Turn Audio” in your device’s Bluetooth® settings to pair and connect.

Volume can be adjusted using the volume control knob or your Bluetooth® device. For best performance, we recommend setting your Bluetooth® device’s volume at 80% or higher.

Bluetooth® is disabled when the speakers are in standby mode. To enable standby mode, turn the volume control knob counterclockwise until the LED indicator turns off.



4

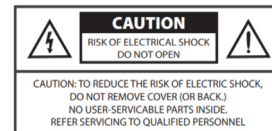
Speaker placement tips

- Place your speakers 4-6 feet apart for better stereo separation.
- Position your speakers so that the tweeters are at roughly the same height as your ears to ensure high-frequencies sound their best.
- Place your speakers 1-2 feet away from the nearest wall for clearer bass.
- Always keep your turntable isolated from speaker vibrations. It's usually best to keep your turntable and speakers on separate surfaces.

5

Safety information

- Read these instructions before using this product.
- Ethos is designed for indoor use only.
- Keep these instructions for future reference.
- Heed all warnings.
- Follow all instructions.
- Do not use this product near water or moisture.
- Clean only with a dry cloth.
- Do not block any ventilation openings. Install in accordance with the manufacturer's instructions.
- Do not install near any heat sources such as radiators, heat registers, stoves or other apparatus (including amplifiers) that produce heat.
- Do not defeat the safety purpose of the polarized or grounding-type plug. A polarized plug has two blades with one wider than the other. A grounding-type plug has two blades and a third grounding prong. The wider blade or third prong are provided for your safety.
- Protect the power cord from being walked on or pinched, particularly at plugs, convenience receptacles and the point where they exit from the apparatus.
- Use only attachments or accessories specified by the manufacturer.
- Use only with the cart, stand, tripod, bracket or table specified by the manufacturer or sold with the apparatus. When a cart is used, use caution when moving the cart/apparatus combination to avoid injury from tip-over.
- Unplug this apparatus during lightning storms or when unused for long periods of time.
- Refer all servicing to qualified service personnel. Servicing is required when the apparatus has been damaged in any way such as power supply cord or plug is damaged, liquid has been spilled or objects have fallen into the apparatus, the apparatus has been exposed to rain or moisture, does not operate normally, or has been dropped.



Model	Ethos 300
Power rating	AC 110-120 V, 60 Hz, 100 W
Dimensions	5.75" x 7.5" x 9.5" (each speaker)
Weight	15.8 lbs total weight (9.8 lbs powered, 6.0 lbs passive)
Operating Temperature	32 ° - 100 °F

FCC Part 15 Notice

This device complies with part 15 of the FCC Rules. Operation is subject to the following two conditions: (1) this device may not cause harmful interference, and (2) This device must accept any interference received, including interference that may cause undesired operation.

This equipment has been tested and found to comply with the limits for a Class B digital device, pursuant to Part 15 of the FCC Rules. These limits are designed to provide reasonable protection against harmful interference in a residential installation.

This equipment generates, uses, and can radiate radio frequency energy and, if not installed and used in accordance with the instructions, may cause harmful interference to radio communications. However, there is no guarantee that interference will not occur in a particular installation. If this equipment does cause harmful interference to radio or television reception, which can be determined by turning the equipment off and on, the user is encouraged to try to correct the interference by one or more of the following measures:

- Reorient or relocate the receiving antenna.
- Increase the separation between the equipment and receiver.
- Connect the equipment into an outlet on a circuit different from that to which the receiver is connected.
- Consult the dealer or an experienced technician for help.

Changes or modifications not expressly approved by the party responsible for compliance could void the user's authority to operate the equipment.

FCC Radiation Exposure Statement

This equipment complies with FCC and IC radiation exposure limits set forth for an uncontrolled environment. This equipment should be installed and operated with minimum distance 20 cm between the radiator and your body. This transmitter must not be co-located or operating in conjunction with any other antenna or transmitter.

Notes on Disposal

If you wish to dispose of this product, please do so in accordance with applicable local, state and federal laws for the treatment of old electrical and electronic equipment.

Conforms to UL STD 62368-1
Certified to CSA STD C22.2#62368-1
Contains FCC ID: 2AMWO-FSCBT1026
Contains IC: 23872-FSCBT1026



3-year warranty



We stand by Ethos with a 3-year warranty that covers any defects in materials or workmanship.

You can view our full warranty policy at uturnaudio.com/warranty.

If you need warranty service, please contact us at support@uturnaudio.com or by phone at (781) 451-1445.

In the box



- Ethos powered speaker (left)
- Ethos passive speaker (right)
- Speaker cable with banana plugs
- Power cable
- RCA cable

Additional support



Setup videos & tutorials
uturnaudio.com/learn



Email
support@uturnaudio.com



Phone
(781) 451-1445